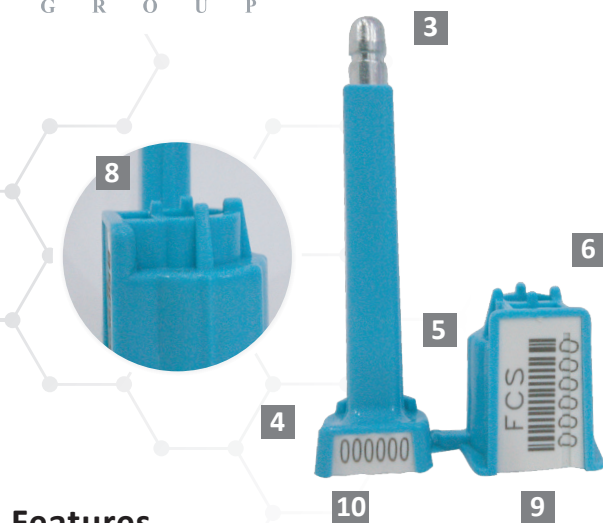


High Security Seal · Data Sheet

Fort Container Seal



Features

- 1 Hardened steel pin and bush for added security.
- 2 The pin and bush are moulded with high-impact ABS to provide high tamper evidence.
- 3 Oval-shaped pin and bush to mitigate 'spin attacks'. The anti-locking mechanism prevents friction and only allows 1-way locking.
- 4 Identical sequential numbers on both parts provide greater security as it prevents part substitution or replacement.
- 5 Engraved paired pin and bush for easier handling.
- 6 The bush is etched with name, logo, sequential numbering and barcode using permanent laser marking. Laser marking offers the highest level of security as it cannot be removed or replaced.
- 7 Two colours for improved product definition, visibility and identification, marking variations and increased operation efficiency. White printing area ensures easy scannable barcodes.
- 8 The seal is designed with an ISO 17712:2013 clause 6 compliant safety feature to trigger indicative tamper evidence upon attacking with forced spinning (with torque of approx. 25-30 kg) while still keeping the seal locked. The irrefutable tamper evidence- with a crack in a designated 'weak spot' in the ABS plastic- contributes to deterring further tampering attempts.
- 9 Groove on number printing position prevents number removal without tamper evidence.
- 10 Wavy printing surface on pin prevents number removal without tamper evidence.

High Security Container Bolt Seal

ISO 17712 "H" Compliant · C-TPAT Compliant

A strong tamper-evident mechanical seal, the Fort Container Seal (FCS) consists of a hardened steel pin and bush moulded with resilient high-impact ABS.

With immense tensile strength and anti-spin locking mechanisms, the FCS is a fortified container bolt seal widely used in shipping, securing intermodal containers and ground transportation. It features a unique two colours in its design for consistent barcode scanability

Technical Specifications

PRODUCT

Material	Locking Length	Pin Diameter	Tensile Strength	Marking Area	Max Marking
Plastic pin and barrel: High-impact ABS	50 mm (0.04 in)	Ø 7 mm (Ø 0.28 in)	1200 kg	14 x 26 mm (0.55 x 1.02 in)	Serial no: 12 digits Barcode: 12 digits
Pin and bush: Hardened Steel					

PACKAGING AND COLOURS

Carton Quantity	Dimensions	Weight kg/carton	Standard Colours
Packed in 10 pcs per die cut box and 250 pcs per carton	250 pcs carton size 485 x 340 x 175 mm	13.5 kg (29.8 lbs)	