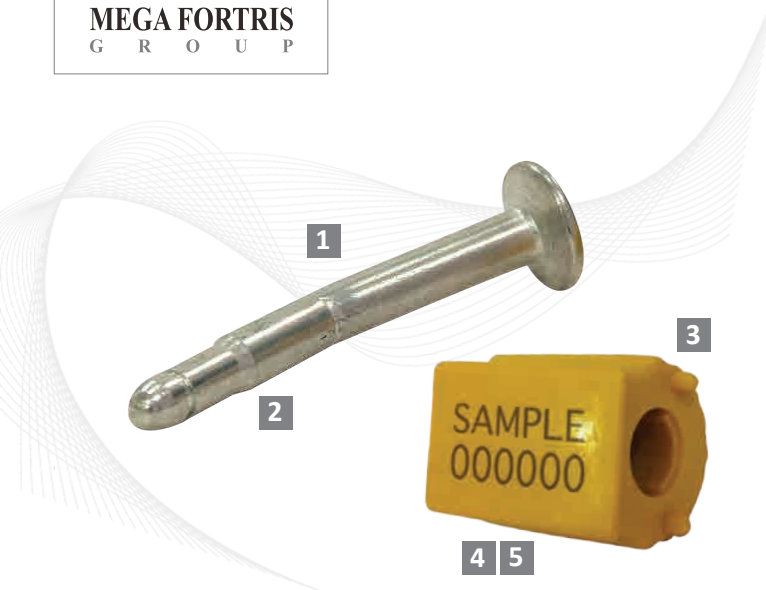


High Security Seal · Data Sheet

# Container Bolt Lock



## High Security Container Bolt Seal

**ISO 17712 "H" Compliant · C-TPAT Compliant**

The Container Bolt Lock's locking mechanism, the clip, is embedded in a groove in the metal bush, making the seals stronger and making them more difficult to tamper with.

Typical applications of the Container Bolt Lock include shipping and intermodal containers. The Container Bolt Lock is also widely used for ground transportation.

### Features

- 1 The metallic pin and bush of the Container Bolt Lock is made of high-carbon steel which gives better strength and added security.
- 2 The metallic pin comes with an option of an angled or a straight pin.
- 3 The barrel is made from high-impact ABS, which is moulded on to the high-carbon steel bush.
- 4 The Container Bolt Lock are etched with permanent laser marking. Laser marking offers the highest level of security as it cannot be removed and replaced.
- 5 Standard markings include serial number and customer name/logo. A variation of bar codes can also be marked with laser technology.

### Technical Specifications

#### PRODUCT

Material	Locking Length	Bolt Diameter	Tensile Strength	Marking Area	Max Marking Digits
<b>Pin and barrel:</b> High-carbon steel	52 mm	Ø 8 mm	2900 kg	13 x 25 mm	9
<b>Barrel:</b> High-impact ABS					

#### OUTER CARTON

Carton Quantity	Dimensions	Weight kg/carton	Volume m <sup>3</sup> /carton	Standard Colours
250 pcs	300 x 280 x 160	14.52	0.01344 m <sup>3</sup>	



**FMM EXCELLENCE AWARD 2012**  
QUEST FOR CONTINUOUS IMPROVEMENT  
BEST MANUFACTURER IN MALAYSIA IN 2012