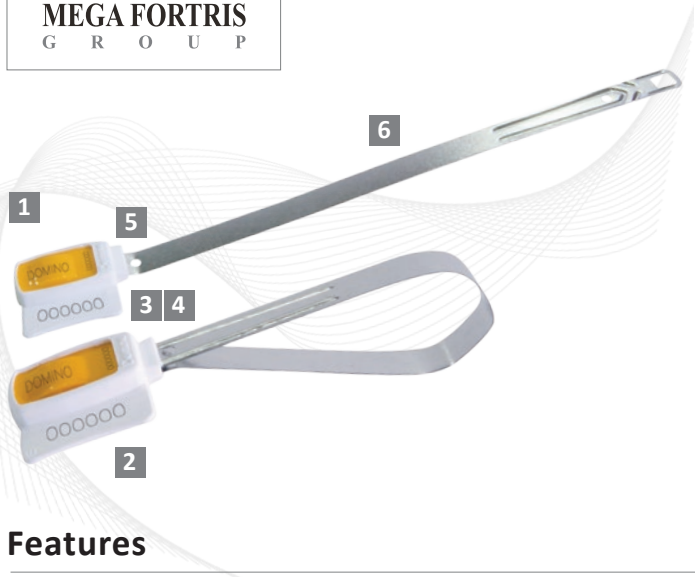


Indicative Seal · Data Sheet

Domino



Fixed Length Metal Strap Seal

The Domino's metal strap can still move slightly when the Domino is sealed, enabling inspectors to detect gluing easily. The Inspection Window is an optional feature which enables quick and easy visual inspection of the locking mechanism for tampering, a unique feature developed by Mega Fortris.

Typical applications of the Domino seal include trucks and tankers, customs control, airline cargo, empty shipping containers, rail wagons and warehouses.

Features



- 1 Colour coding is enabled through different coloured caps and seal bases.
- 2 Domino seals are etched with permanent laser marking for names, logos, sequential numbers and barcodes. Laser marking offers the highest level of security as it cannot be removed or replaced.
- 3 With markings etched on a corrosion-proof plastic surface, the marking stays clear and legible for a long time after its initial application.
- 4 Ultrasonic welding technology is deployed to permanently bond caps and seals, and cannot be cut or forced open without leaving clear evidence of tampering.
- 5 Alignment holes ensure easy inspection of sealing.
- 6 The strong and durable metal strap can withstand harsh handling and climatic conditions experienced with long-haul shipments.

Technical Specifications

PRODUCT

Product Code:	Material	Locking Length	Strap Dimensions	Tensile Strength	Marking Area	Max Marking Digits
DM07_22	Cap: PP	185 mm	7.0 / 10.0 x 0.25mm	90kg	Flap: 6.0 x 22.0 mm	8
DM10_22	Strap: Tin-plated metal				Cap: 10.0 x 22.0 mm	

INNER CARTON

Product	Carton Quantity	Dimensions	Weight kg/carton	Volume m ³ /carton	Standard Colours
Domino 7mm DM07_22	1000 pcs	378 x 313 x 120mm	7.38 kgs	0.01420 m ³	Base  Cap* 
Domino 10mm DM10_22	1000 pcs	385 x 320 x 120mm	6.26 kgs	0.01478 m ³	

*Option: Transparent with inspection window



FMM EXCELLENCE AWARD 2012
QUEST FOR CONTINUOUS IMPROVEMENT
BEST MANUFACTURER IN MALAYSIA IN 2012