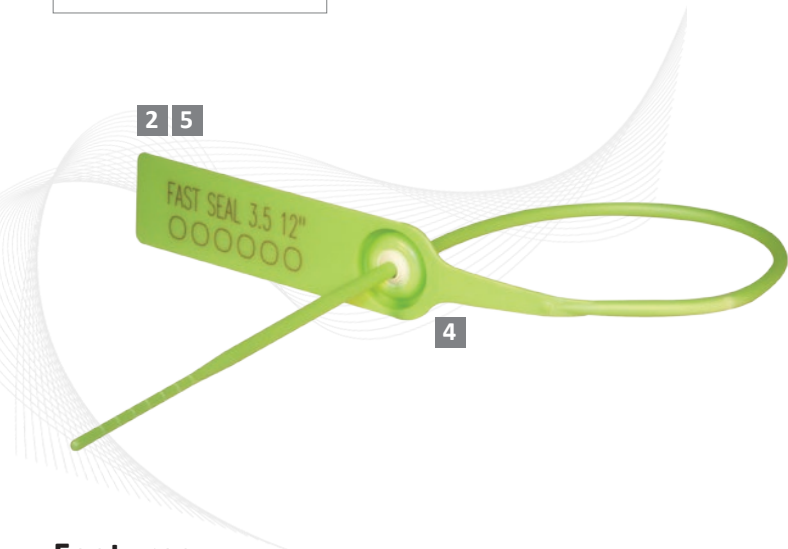


Indicative Seal · Data Sheet

# Fast Seal 3.5



## Strong Pull-Tight Seal with Metal Locking

The fast Seal 3.5 is a strong and durable indicative seal with highly tamper-evident security features.

It is suitable for securing goods in transit for various sectors: banks, postal services, airline cargo, pharmaceuticals, food and beverages and transportation of high-value goods.

### Features

- 1 The Fast Seal 3.5 is a strong and durable seal designed for longer seal length and stronger sealing requirements.
- 2 The large flap area allows ample space for marking.
- 3 The embedded spikes at the back of the seal provide better strapping grip on bags or other slippery materials.
- 4 Heat staking technology is used to permanently fix the cap to the seal. Heat staking cannot be cut or forced open without leaving clear evidence of tampering.
- 5 The Fast Seal 3.5 is etched with secure and permanent laser marking for name, logo, sequential numbers & barcodes. Laser marking offers the highest level of security as it cannot be removed or replaced.
- 6 The options for durable nylon or PP securing straps gives users different choices for strength customisation to match different applications.

### Technical Specifications

#### PRODUCT

Product	Material	Locking Space	Strap Dimensions	Pull Strength	Marking Area	Max Marking Digits
FS 3.5 12"	<b>Body:</b> PP/ Nylon	305 mm	ø 3.5 mm	35 kg (PP)	<b>Flap:</b> 55 x20 mm	14
FS 3.5 15"		380 mm	ø 3.5 mm	40 kg (NY)	<b>Flap:</b> 55 x20 mm	14
FS 3.5 18"		457 mm	ø 3.5 mm		<b>Flap:</b> 55 x20 mm	14

#### INNER CARTON

	Carton Quantity	Dimensions	Weight kg/carton	Volume m <sup>3</sup> /carton	Standard Colours
FS 3.5 12"	1,000 pcs	465 x 285 x 310 mm	6.68	0.04108	
FS 3.5 15"	1,000 pcs	615 x 280 x 300 mm	7.11	0.05166	
FS 3.5 18"	1,000 pcs	665 x 250 x 240 mm	8.00	0.03990	



**FMM EXCELLENCE AWARD 2012**  
QUEST FOR CONTINUOUS IMPROVEMENT