



**MEGA FORTRIS**  
G R O U P

## **INDICATIVE SEAL**

# **FORT DOUBLE LOCK (FDL)**

Fixed Length Seal

***Rounded and tamper-evident locking for easy sealing and versatility.***

Fort Double Lock features a flat round locking head for quick and easy application without compromising its securing features. The seal has a large marking area on the flap for detailed identifiers and easy reading. The smooth surface and ribbed section help with gripping and enhance operational efficiency.

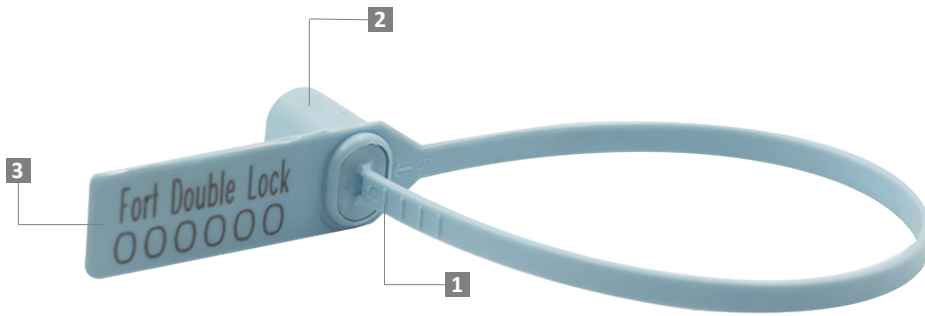
#### **Applications:**

- Retail Applications
- Chemical and Oil Refinery
- Warehousing and Logistics
- F&B Applications



PREVENTION · PROTECTION · PEACE OF MIND





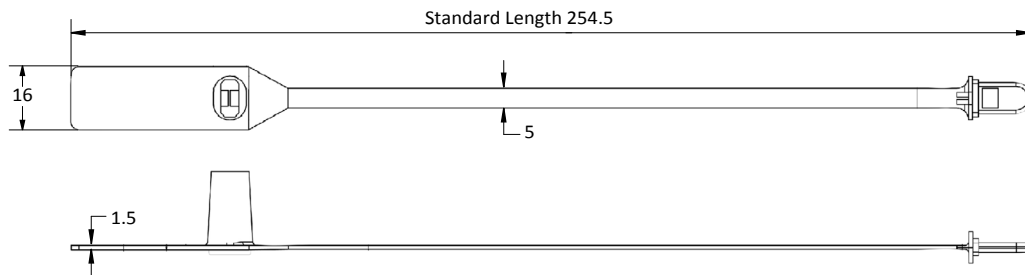
LASER MARKING OPTION



VIEW APPLICATION GIF



- 1 The Fort Double Lock is moulded with high-impact PP material with a grip at the end for quick detection of breaking point and easy removal with clear evidence of tampering.
- 2 One-way double locking mechanisms are embedded for easy application and prevent tampering.
- 3 The large flap allows ample space for irreversible identifiers such as name, logo, barcode, serial number and QR code to be laser-marked on it.
- 4 Biodegradable additives for plastic material are available.



TECHNICAL SPECIFICATIONS

PRODUCT - FORT DOUBLE LOCK (FDL)						
Code	Material	Locking Length	Locking Size	Tensile Strength	Marking Area	Max Marking Digits
FDL	<b>Plastic :</b> Polypropylene (PP) Temperature Range: -5°C to 80°C	193 mm (7.6 in)	5 mm (0.2 in)	>16 kgf (>35.3 lbf)	12 x 32 mm (0.5 x 1.3 in)	<b>Serial no : 8</b> <b>Barcode : 8</b>

PACKAGING					
Carton	Quantity	Dimensions (mm)	Gross Weight (kg)	Volume (m <sup>3</sup> )	Standard Pastel Colours
Inner	1000	454 x 234 x 284 (17.9 x 9.2 x 11.2 in)	4.9 (10.8 lb)	0.030 (1.06 cu.ft.)	Body : WH PSYL PSOR PSRD PSBL PSGN Cap : WH

For colour customisations, kindly contact us for further information.

Updated Date : 29 March 2022