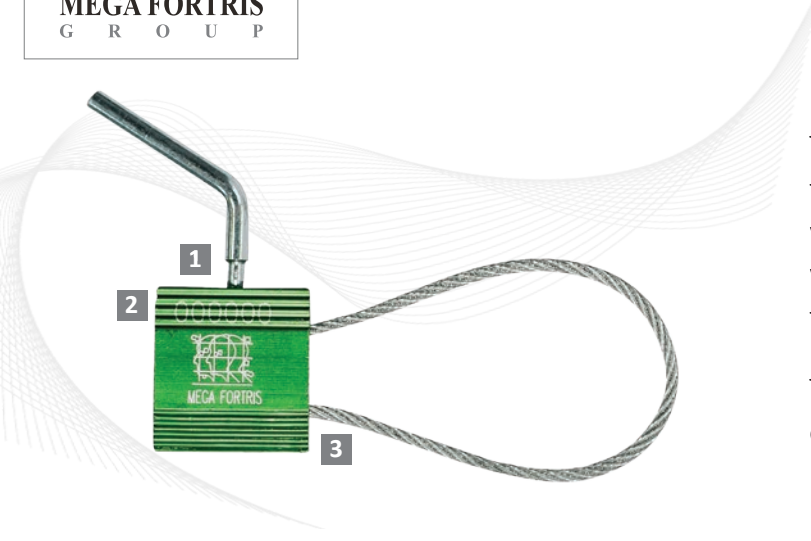
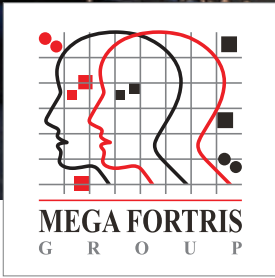


Cable Breakaway



Durable, Pull-Tight Cable Seal

The Cable Breakaway seal is secured by turning the provided shear bolt until it securely locks the wire in place. The shaft of the shear bolt breaks when it has tightened the wire completely – and the seal can only be opened with a cable cutter.

The Cable Breakaway seals are highly cost-effective compared to other cable seals made from premium quality materials.

- 1 The seals are etched with permanent laser marking. Laser marking offers the highest level of security as it cannot be removed or replaced.
- 2 The exterior has been designed with a rib pattern, which protects the marking during rough handling.
- 3 One end of the cable is permanently secured into the locking body.
- 4 The Cable Breakaway seals are highly suited to securing valuables for longer periods of time because of its simple yet very efficient locking.
- 5 The cable Breakaway seals are all anodized in solid colours which accommodate customised laser marking. Anodizing also makes colour coding possible and eases identification from a distance.

Technical Specifications

PRODUCT

Product	Material	Cable Length	Cable Diameter	Tensile Strength	Marking Area	Max Marking Digits
MVCB 100	Body: Aluminium	250 mm (std)	∅ 1.0 mm	250 kg	Body: 10.0mm x 15.0mm	6
MCB 150	Cable: Galvanized steel wire	180 mm (std)	∅ 1.5 mm	250 kg	Body: 20.0mm x 20.0mm	10
MCB 250		180 mm (std)	∅ 2.5 mm	300 kg	Body: 20.0mm x 20.0mm	10
MCB 500		250 mm (std)	∅ 5.0 mm	1000 kg	Body: 30.0mm x 36.0mm	14

INNER CARTON

OUTER CARTON

	Carton Quantity	Dimensions mm	Weight kg/carton	Volume m ³ /carton	Carton Quantity	Dimensions mm	Weight kg/carton	Volume m ³ /carton
MVCB100 x 25cm	<i>Depends on wire length</i>	300 x 270 x 160	<i>Depends on wire length</i>	0.01296	<i>Depends on wire length</i>	930 x 860 x 340	<i>Depends on wire length</i>	0.27193 m ³
MCB150 x 18cm		300 x 270 x 160		0.01296		930 x 860 x 340		0.27193 m ³
MCB250 x 18cm		300 x 270 x 160		0.01296		930 x 860 x 340		0.27193 m ³
MCB500 x 25cm		300 x 270 x 160		0.01296		930 x 860 x 340		0.27193 m ³

Standard Colours



FMM EXCELLENCE AWARD 2012
 QUEST FOR CONTINUOUS IMPROVEMENT
 BEST MANUFACTURER IN MALAYSIA IN 2012