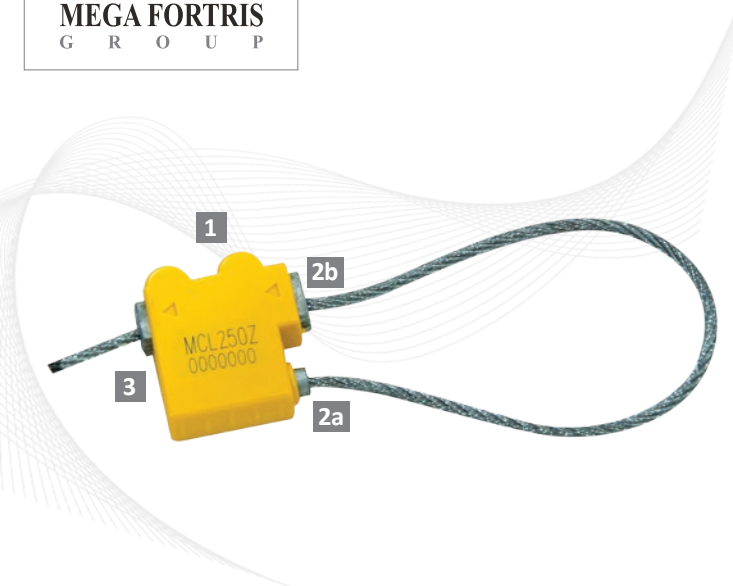


Security Seal · Data Sheet

MCLZ 250



Solid, Superior Cable Seals

The introduction of Mega Fortris' new MCLZ range of cable security seals is a major step towards improving the security of the global supply chain. The security value of this unique product is unmatched in the security seal industry, and will provide our many security-conscious clients with an effective means to upgrade their supply chain security.

No other cable security seal offers equally high tamper evidence features, excellent protection against tamper attacks and a locking mechanism that is protected against picking.

Features

- 1** Unique to the security seal industry, this 3rd generation cable security seal features a non-linear lock body design that prevents shim attacks. Shock-proof ABS is molded over the zinc lock body providing clear signs of tampering and enables clear laser marking of permanent seal number, bar code, customer name or logo.
- 2** One end of the cable is permanently secured in the lock body and is protected against tampering by a

protruding wire guide (2a). The non-linear insert hole features a locking mechanism design that offers unmatched protection against picking (2b).

- 3** The lock body of the MCL 250 Z features a large print space for laser marking which provides the most tamper-resistant and tamper-indicating properties, as it cannot be altered without showing clear signs of tampering.

Technical Specifications

PRODUCT

Material	Standard Cable Size	Tensile Strength	Marking Area	Max Marking
Body, Cover: Zinc	Ø 2.5 mm x	350 to 450 kgs/f	19 x 22 mm	Serial no: 9 digits
Coating: High-impact ABS	Length 220 mm	(770 to 990 lb/f)	(0.75 x 0.87 in)	Barcode: 7 digits*
Locking Component: Hardened Steel	(Ø 0.10 in x			
Cable: Non-Preformed Wire Galvanised Iron	Length 8.66 in)			

INNER CARTON

Carton Quantity	Dimensions	Weight kg/carton	Volume m ³ /carton
250 pcs	300 x 280 x 120 mm (11.81 x 11.02 x 4.72 in)	8.16 kgs (18.00 lbs)	0.01008 m ³ (0.3560 ft ³)

OUTER CARTON

Carton Quantity	Dimensions	Weight kg/carton	Volume m ³ /carton
6750 pcs	930 x 860 x 340 mm (36.61 x 33.86 x 13.39 in)	224.2 kgs (494.28 lbs)	0.2719 m ³ (9.602 ft ³)

Standard Colours



*Barcode marking available only for white ABS coating



FMM EXCELLENCE AWARD 2012
QUEST FOR CONTINUOUS IMPROVEMENT
BEST MANUFACTURER IN MALAYSIA IN 2012