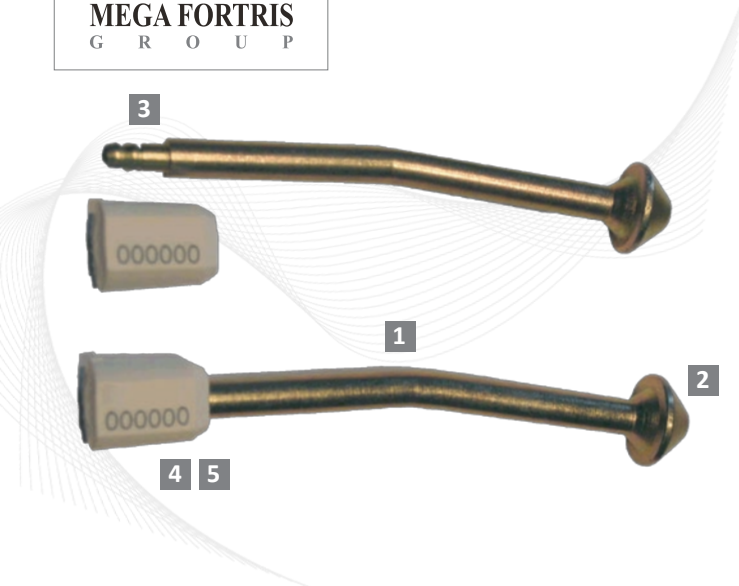




MEGA FORTRIS  
G R O U P

High Security Seal · Data Sheet

# Mega Bolt Lock



## Extra Strong, Angled Container Bolt Seal

The Mega Bolt Lock is a specially designed container bolt seal made of hardened steel. The long, angled special bolt head design gives the Mega Bolt Lock extra security features for securing and sealing high security transport applications.

Typical applications of the Mega Bolt Lock seal include containers, lorries, rail wagons and air cargo.

### Features

- 1 The unique long and angled bolt is made of fully hardened steel.
- 2 The cone-shaped bolt seal head is designed to ensure that the seal cannot be cut or removed with a normal bolt cutter.
- 3 The steel inner bolt has a double-locking chamber for enhanced tamper resistance.
- 4 The outer casing is made of high-impact non-flammable ABS to ensure maximum strength.
- 5 The barrel is etched with permanent laser marking for names, logos, sequential numbers and barcodes. Laser marking offers the highest level of security as it cannot be removed or replaced.
- 6 The Mega Bolt Lock is also available with a metal bush.

### Technical Specifications

#### PRODUCT

Material	Locking Length	Bolt Diameter	Tensile Strength	Marking Area	Max Marking Digits
High-carbon steel pin & bush (Metal bush: $\varnothing 22\text{mm} \times 23\text{mm}$ )	150 mm	$\varnothing 9.5 \text{ mm}$	2,400 kg	<b>Barrel:</b> 20.0 x 10.0 mm	8

#### OUTER CARTON

Carton Quantity	Dimensions (mm)	Weight kg/carton	Volume m <sup>3</sup> /carton	Standard Colours
100 pcs (Inner Box)	300 x 270 x 120 mm	13.07 kg	0.00972 m <sup>3</sup>	



**FMM EXCELLENCE AWARD 2012**  
QUEST FOR CONTINUOUS IMPROVEMENT  
BEST MANUFACTURER IN MALAYSIA IN 2012