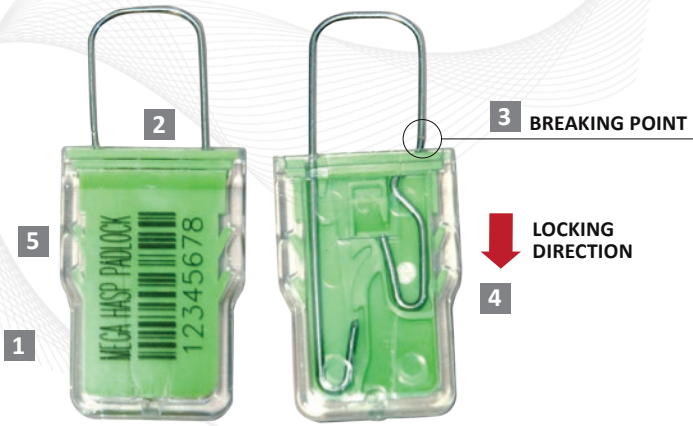


Indicative Seal · Data Sheet

# Mega Hasp Padlock



## An Affordable, User-Friendly Tamper-Evident Seal

The Mega Hasp Padlock is a slim and user-friendly padlock with innovative tamper-evident features that is suitable for a range of different applications, such as securing utility meters, aircraft liquor carts, drums, switches, and valves.

Versatile, strong and durable, the Mega Hasp Padlock offers high tamper evidence with the clear view of its secured locking mechanism and is also easy to apply and remove. Markings are etched directly onto the polycarbonate, resulting in highly effective barcode readings for operation efficiency.

### Features

- 1 The Mega Hasp Padlock seal is etched with permanent laser marking for customized names, logos, barcodes and sequential numbers, offering the highest level of security as it cannot be removed or replaced without showing clear signs of tampering.
- 2 Vibrant colours are available for the acetal insert that is encased within a sturdy polycarbonate body, which allows for good, consistent readings when barcoded.
- 3 The stainless steel spring is scored at its breaking point for easy, tamper-evident removal.
- 4 The clear polycarbonate body enables complete visibility of the locking mechanism at all times, contributing to the high tamper-evidence of the Mega Hasp Padlock.
- 5 The design of the acetal insert that fits within the polycarbonate body features small one-way locking hooks that give a secondary layer of protection once the seal has already been assembled.

### Technical Specifications

#### PRODUCT

Material	Hasp Dimensions	Tensile Strength	Marking Area	Max Marking Digits
<b>Body:</b> Polycarbonate <b>Insert:</b> Acetal <b>Spring:</b> SUS304 Steel	75mm x Spring $\varnothing$ 1.2mm	30-40 kg	Flap: 16mm x 24mm	Serial No.: 9 Barcode: 9

#### Standard Colours



**FMM EXCELLENCE AWARD 2012**  
QUEST FOR CONTINUOUS IMPROVEMENT  
BEST MANUFACTURER IN MALAYSIA IN 2012