

SECURE

System : 3 phase 4 wire
Voltage : 3 x 230/400V
Current : 3 x 10 - 100A
Frequency : 50Hz
Test LED
800 Pulses/Unit

kWh Cl. 1.0
kVAh Cl. 2.0



MEGA FORTRIS
G R O U P

INDICATIVE SEAL

MEGA TWISTER SP (MTW SP)

Application Seal

Extensive range of designs for a variety of identifying purposes.

The Mega Twister SP seal range consists of multiple identifier placement options to accommodate different requirements. Their simple locking mechanism makes the seals user-friendly and versatile for different applications. The seals are small in size and space-saving.

Applications:

- Utility Meters & Scales
- Chemical and Oil Refinery
- Transportation
- Banking

C1 O1 C2 O2 RS232

Mega Twister SP BC
0000000



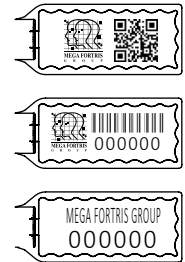
PREVENTION · PROTECTION · PEACE OF MIND



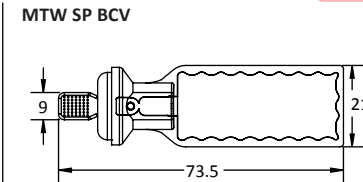
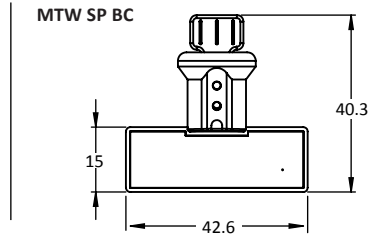
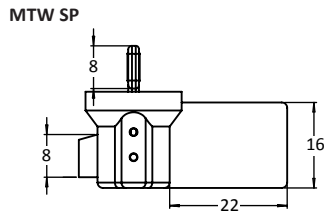


- 1 The Mega Twister SP seals are moulded with a twister locking insert and white cap ultrasonically welded in a plastic transparent body for a clear view of the locking and evidence of tampering.
- 2 Stainless steel wire is required for the twister locking to achieve quick and tight securing of the seals.
- 3 The laser marking area of each design is placed differently with the options of horizontal area on the side (MTW SP), at the bottom (MTW SP BC), and vertical area at the bottom (MTW SP BCV).
- 4 The laser marking area is sufficient for irreversible essential identifiers such as name, logo, barcode, serial number and QR code.
- 5 Colour coding is possible with a combination of clear plastic body and vibrant colour insert, which is available in a wide range of choices.
- 6 Special UV additives for the product's long-lasting performance are available. Biodegradable additives are also available.

LASER MARKING OPTION



VIEW APPLICATION GIF



TECHNICAL SPECIFICATIONS

PRODUCT - MEGA TWISTER SP (MTW SP)						
Code	Material	Locking Length	Locking Size	Tensile Strength	Marking Area	Max Marking Digits
MTW SP	Plastic body: Polycarbonate (PC) Temperature Range: -40°C to 85°C	250 mm (9.8 in)	Ø 0.8 mm (0.03 in)	>30 kgf (>66 lbf)	TBC	TBC
MTW SP BC	Plastic insert: Acetal Temperature Range: -40°C to 120°C				36 x 9.0 mm (1.4 x 0.4 in)	Serial no : 13 Barcode : 13
MTW SP BCV	Cable: Plastic-coated Stainless Steel 304 (SUS 304)				12 x 34 mm (0.5 x 1.3 in)	

PACKAGING

Carton	Quantity	Dimensions (mm)	Gross Weight (kg)	Volume (m³)	Standard Colours
MTW SP Inner	1000	338 x 255 x 190 mm (13.3 x 10 x 7.5 in)	4.68 (10.3 lb)	0.016 (0.565 cu. ft.)	Body : <input type="checkbox"/> TRNS
MTW SP BC Inner		284 x 254 x 299 mm (11.2 x 10 x 11.8 in)	5.14 (11.3 lb)	0.022 (0.777 cu. ft.)	Cap : <input type="checkbox"/> WH
MTW SP BCV Inner		568 x 235 x 180 mm (22.4 x 9.3 x 7.1 in)	6.54 (14.4 lb)	0.024 (0.848 cu. ft.)	Insert : <input type="checkbox"/> WH <input type="checkbox"/> YL <input type="checkbox"/> OR <input type="checkbox"/> GN <input type="checkbox"/> RD <input type="checkbox"/> BL

For colour customisations, kindly contact us for further information.

Updated Date : 29 March 2022