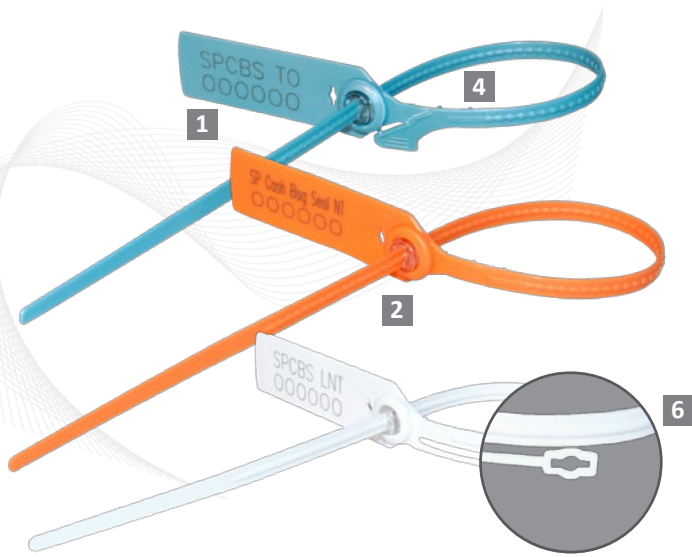


Indicative Seal · Data Sheet

# SP Cash Bag Seal



## Indicative Security Seal With Metal Locking

The SP Cash Bag Seal is so named for its primary sealing applications for the effective securing of cash-in-transit. It is also versatile enough for additional applications across sectors to secure the transportation of high-value goods.

The typical applications for this universal bag seal include sacks or bags designed for high-value goods transportation in numerous industries: finance, airline cargo management, postal services, clinical waste management, courier services and cash-in-transit.

### Features

- 1 The SP Cash Bag seals are etched with permanent laser marking. Laser marking offers the highest level of security as it cannot be removed and replaced.
- 2 Heat staking is used to fasten caps to the seals. Heat staking is too strong to be cut or forced open without leaving clear evidence of tampering.
- 3 Metal clip locking provides better locking and greater pull strength to the long, thick strap.
- 4 The spikes on the back of the strap provide a better grip on bags and other slippery materials.
- 5 Double-sided locking teeth on the middle of the strap provide greater security.
- 6 The SP Cash Bag seals also come with label tags to adhere to specific customer requirements. The additional indicative feature provides convenience and operation efficiency.

### Technical Specifications

#### PRODUCT

Product Code	Material	Strap Length	Strap Dimensions	Pull Strength	Marking Area	Max Marking Digits
SP CBS NT (Non Tear-Off)	PP / Nylon	240 mm	6 mm	27 kg (PP) / 31 kg (NY)	21.0 x 50.0 mm	14
SP CBS TO (Tear-Off)						
SP CBS LNT (Label Tag, Non Tear-Off)						
SP CBS LTO (Label Tag, Tear-Off)						

#### INNER CARTON

Carton Quantity	Dimensions mm	Weight kg/carton	Volume m <sup>3</sup> /carton	Standard Colours
1,000	450 x 250 x 260 mm	3.85	0.02925	



**FMM EXCELLENCE AWARD 2012**  
 QUEST FOR CONTINUOUS IMPROVEMENT  
 BEST MANUFACTURER IN MALAYSIA IN 2012